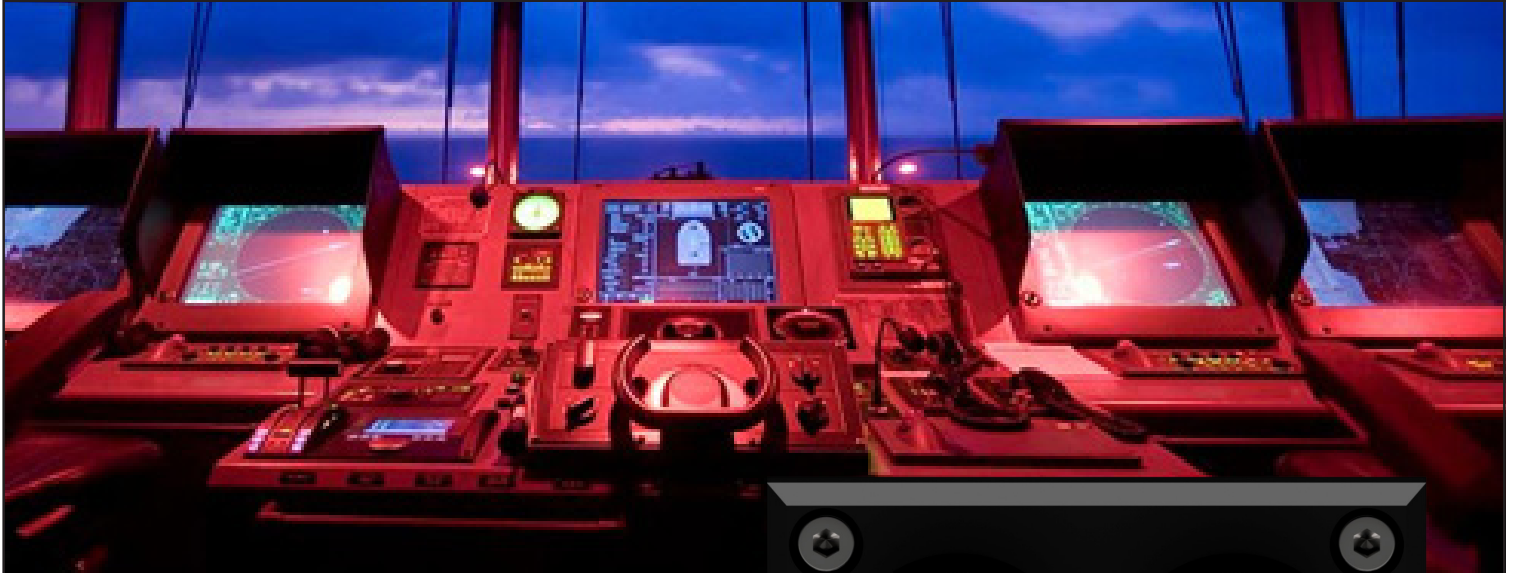


LOPO  
LIGHT

# NEWS

## CONTROL & DIMMING SWITCH



### NEW CONTROL AND DIMMING SWITCH FOR DECK/INTERIOR LIGHTS

To get the best experience with the 400-22x deck/interior light series you can now get a control and dimming solution for up to 20 lights.

The selection switch enables red light for night use, warm white, medium white and cold white for evening/daytime use.

The dimming function has stepless dimming from 0 to 100%

The compact size and waterproof properties of the control panel (30 x 50mm) allows for installation anywhere.

The power electronics is housed in a separate box and can be placed close to the lights and away from the control panel.



# PRODUCT DATA



## Part numbers:

400-143: Control panel  
400-144: 10 light power electronics  
400-145: 20 light power electronics

## Installation considerations:

Control panel is waterproof (IP67) from front.  
The 10 and 20 light power electronics should be placed close to the lights and in a dry place. The unit can be installed in any position and on any surface.

## Power consumption:

Less than 0,3W

## Power-supply:

Any voltage between 10.0V and 32.0V

## Fusing:

Suggested external fuse: 7,5A slow-blow

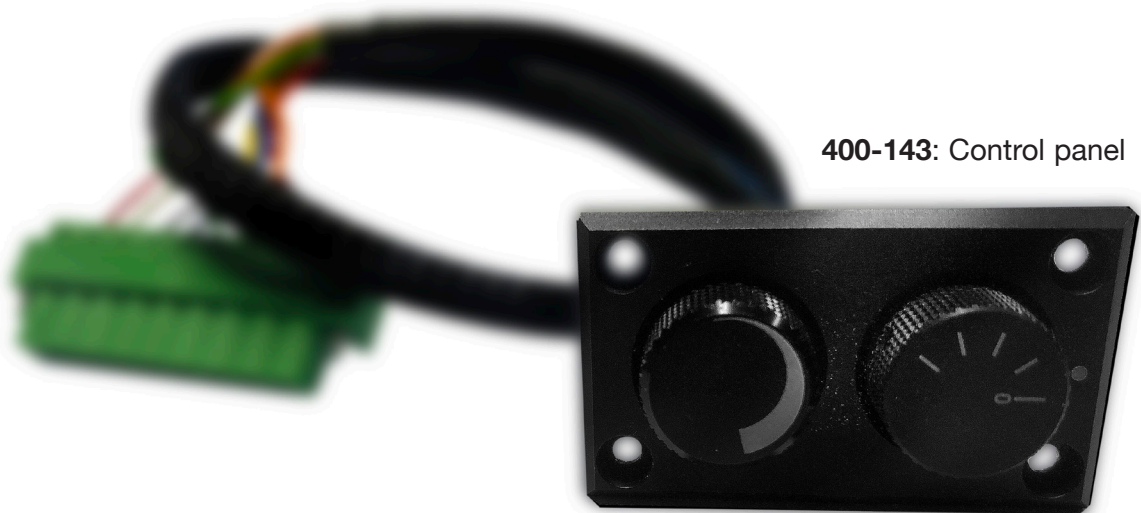
## Dimming principle:

## Environmental:

EMC: EN-60945  
Waterproof to IP67 (control panel front)  
Max ambient temp.: -10 to +50 °C.  
Min ambient temp: -20 °C.  
Max storage temp: +75 °C.

## Dimensions:

Control Panel: 30 x 50 mm  
Power electronics (10 & 20 lights):  
102 x 89 x 23 mm



400-144: 10 light power electronics

