

LOPO
LIGHT



NEWS

HOISTABLE LIGHTS



THE LOPOLIGHT HOISTABLE LIGHTS

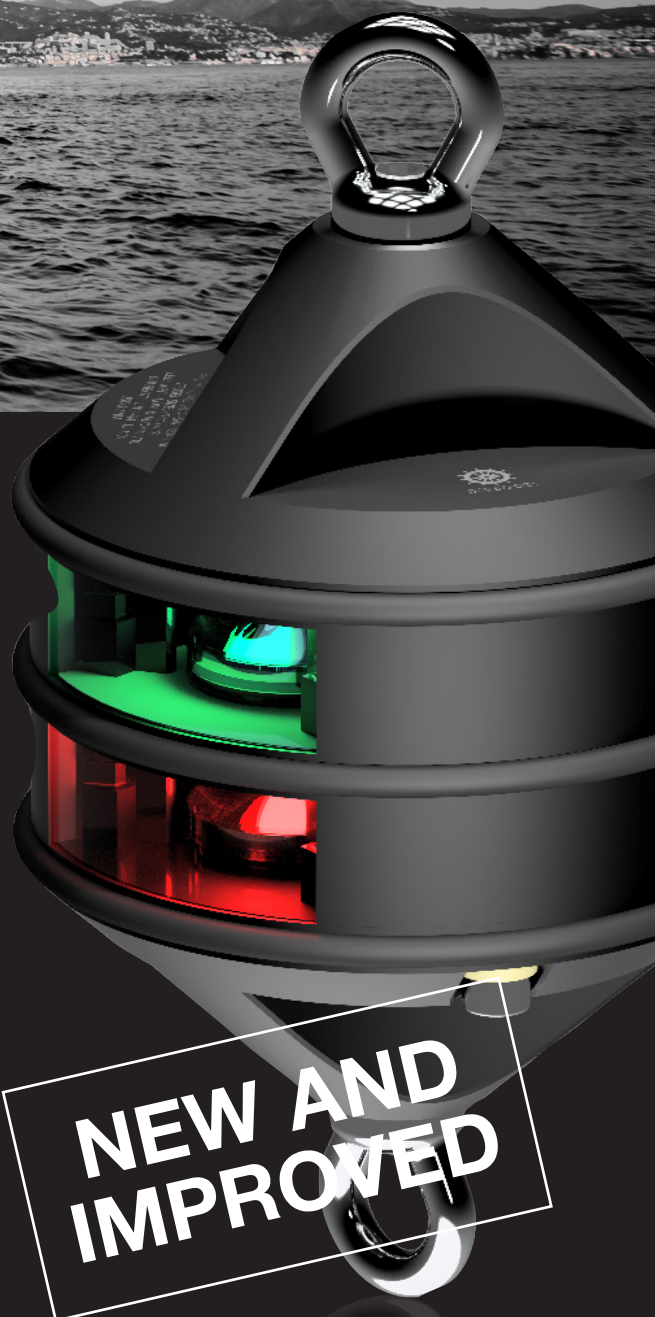
New LED and optics system – similar to the rest of the Lopolight range. The new version is easier to work with, as the cable detaches.

The lights will maintain their alignment – and not ‘capsize’ due to the longer distance between top and bottom.

The lights also have rubber bumpers to protect the vessel.

The range is complete from the single anchor light, the N.U.C or R.A.M. chains – and even the

Suez Canal ‘Christmas tree’ strings. To maintain chafe protection and good looks the power cable is hidden inside the inter-connection ropes. As usual for Lopolight the lights are fully potted, IP68 waterproof and vibration proof. The lights integrate perfectly to the Lopolight Navigation Light Controller system.



UNDER 50 METERS

ANCHOR LIGHTS

2nm 360° White, silver	200-012G2-H1C
2nm 360° White, black	200-012G2-H1C-B

N.U.C. LIGHTS

2nm 360° Red, hoist, silver	200-014G2-H1C
2nm 360° Red, hoist, black	200-014G2-H1C-B

SUEZ "CHRISTMAS TREE"

OVER 50 METERS

3nm 360° White, silver	300-112G2-H1C
3nm 360° White, black	300-112G2-H1C-B

3nm 360° Red, silver	300-114G2-H1C
3nm 360° Red, black s	300-114G2-H1C-B

3nm 360° White/Red/Green black	300-112+14+15G2H2CBP
3nm 360° White/Red/Green, silver	300-112+14+15G2H2CP
3nm 360° White/Red, black	300-112+14G2-H1C-B-P
3nm 360° White/Red, silver	300-112+14G2-H1C-P
3nm 360° White/Red, black	300-112+14G2-H2C-B-P
3nm 360° White/Red, silver	300-112+14G2-H2C-P
3nm 360° White/Green, black	300-112+15G2-H2C-B-P
3nm 360° White/Green, silver	300-112+15G2-H2C-P
3nm 360° White, black	300-112G2-H2C-B-P
3nm 360° White, silver	300-112G2-H2C-P
3nm 360° White, double, black	300-112G2ST-H1C-B
3nm 360° Red/Green, black	300-114+15G2-H2C-P
3nm 360° Red, silver	300-114G2-H1C-P
3nm 360° Red, black	300-114G2-H2C-B
3nm 360° Red, silver	300-114G2-H2C-P
3nm 360° Green, black	300-115G2-H1C-B-P
3nm 360° Green, black	300-115G2-H2C-B-P

