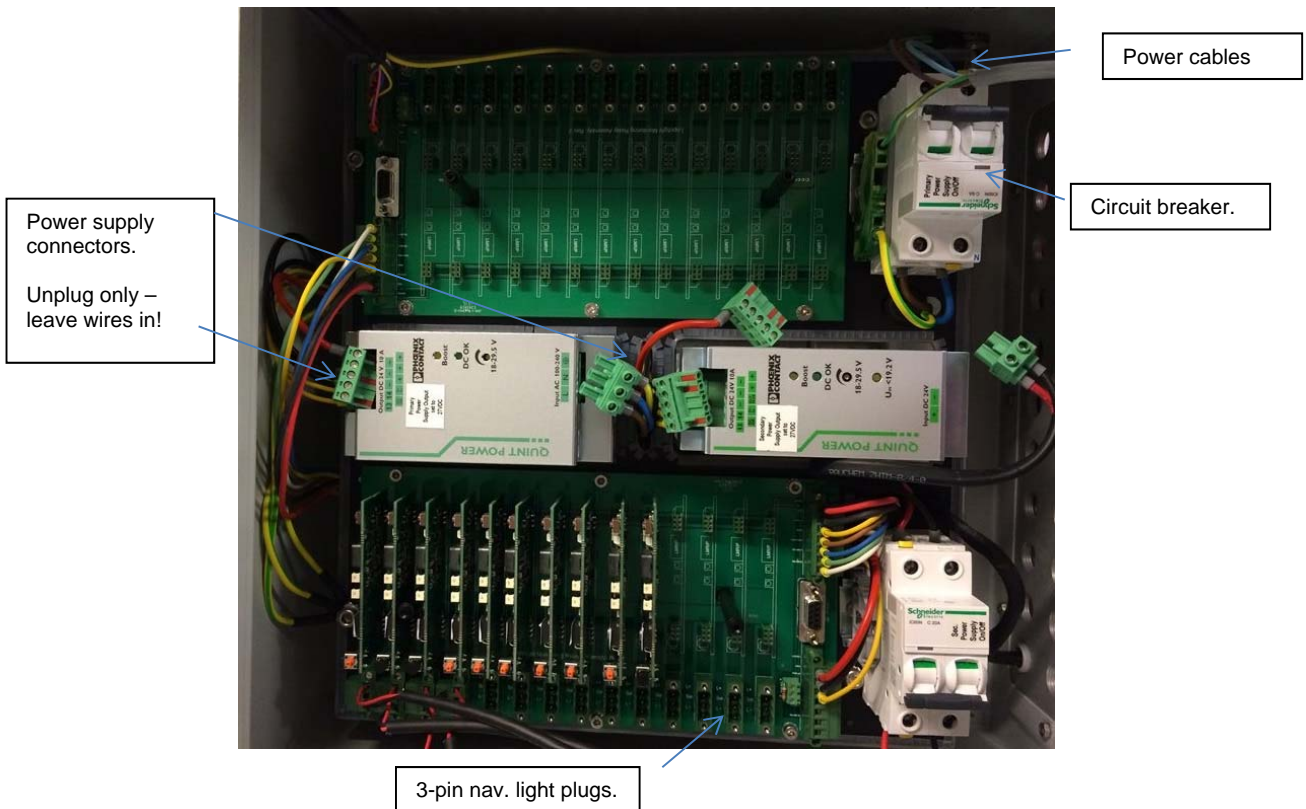
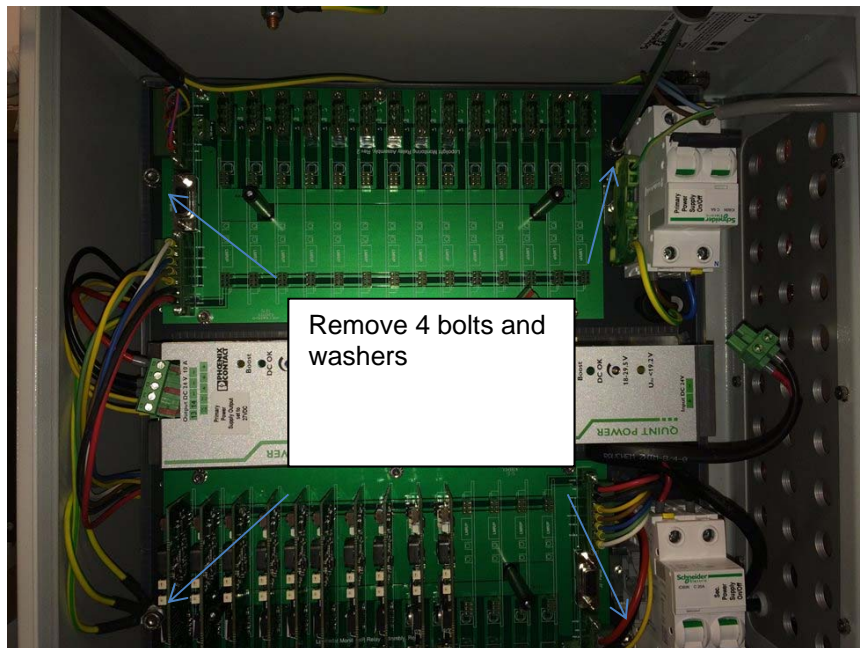


Manual: Change of Power-Supply in NLC Rev.1 3 pages Date: 7<sup>th</sup> March, 2016  
Difficulty: To be performed by skilled craftman (electrician) only.  
Risk level: Risk of electric chock. Standard precautions apply.

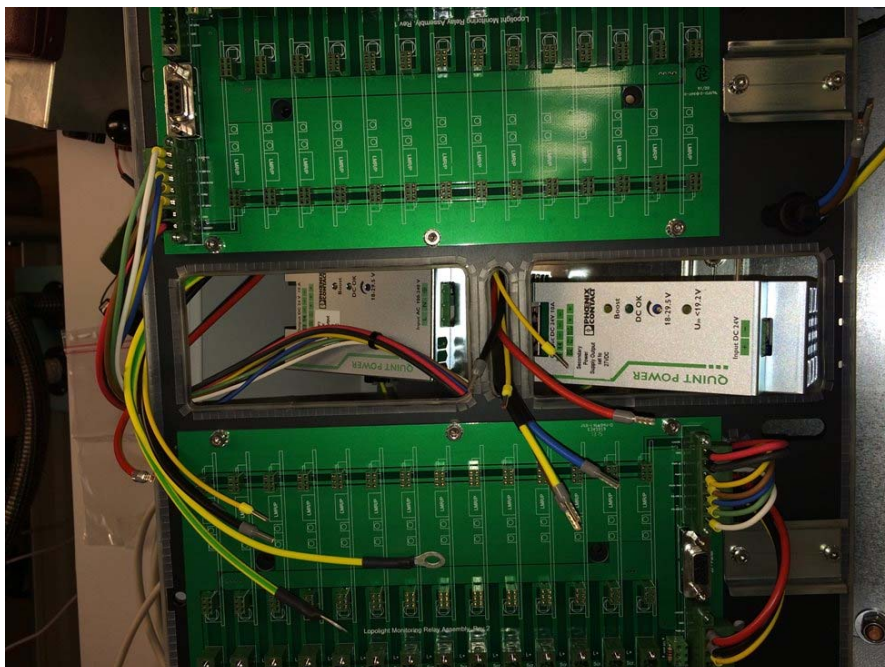
- Switch off circuit-breakers. Isolate from main power distribution, and disconnect power cables. (if considered necessary) .
- Unplug all navigation lights. (3 pin green plugs)
- Unplug all connectors on power-supplies. (2\*3 pieces). Do not disconnect wires from plugs!



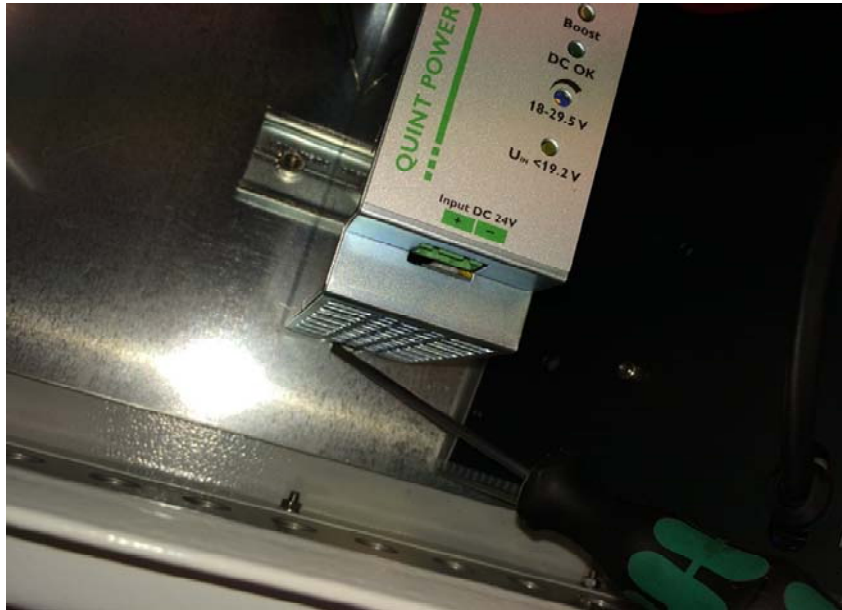
- Remove four pieces 6mm inhex-type bolts and washers. Note earth connections.



- Pull middle plate off – gently. All power connectors will follow plate.



- Release power in question from DIN rail
- Click new power in and position in middle of din rail.



- Reinstall middle plate. Remember the earth connections under one of the bolts.



- Change power-supply plugs if swapping between 24VDC and 115/240VAC or vice versa. Wires fit new power plug “one to one”, but plugs are coded differently. Install earth wire on new AC power-supply (input side).
- Reinstall all power and nav. light cables and plugs. Switch power back on.
- **ADJUST PRIMARY POWER TO 27 VDC, and SECONDARY TO 26VDC**